
The TESI RUNNER model's sinuosity is its distinctive feature and makes dynamism the absolute protagonist in every room. TESI RUNNER has as standard equipment: valve, lockshield, shelves for installation in a coordinated finish, chromed vent valve, chromed pipe cover and hole cover rosette. TESI RUNNER is available in: 2 heights 1802 and 2002 mm; 3 widths from 391 to 571 mm; thermal powers from 994 to 1668 Watt.



Tesi Runner, 12 elements, Hight 1800 mm, Lenght 391 mm, Sablé

Construction features

sheet steel tubes with diameter 25 mm
moulded sheet steel manifolds
element length 45 mm
manifold top and bottom end threads 1/2" G right
maximum allowed working pressure 10 bar
maximum allowed working temperature 95°C

Standard equipment

kit for fixing to the wall in a finish coordinated with the radiator
hydraulic connection kit (valve and lockshield valve) in a finish coordinated with the radiator
chrome-plated vent valve kit
kit of pipe covers and hole cover kit (rosettes)
1 1/2" end plug complete with chrome-plated cover
N.B. The valves provided are a valve and lockshield valve in a angle version or angle valve assembly with pitch 50 mm for versions with a 50 mm connection, complete with couplings for copper fittings (diameter 12, 14 and 15 mm), and multilayer pipes (14 thick 2 and 16 thick 2).

Certifications



Plus



Technical data

Model	Deph (mm)	Height (mm)	Width (mm)	Conn. C. (mm)	Weigth (kg)	Capacity (lt)	$\Delta t=50^{\circ}\text{C}$ (btu/h)	$\Delta t=50^{\circ}\text{C}$ (kcal/h)	$\Delta t=50^{\circ}\text{C}$ (Watt)	$\Delta t=40^{\circ}\text{C}$ (Watt)	$\Delta t=30^{\circ}\text{C}$ (Watt)	$\Delta t=20^{\circ}\text{C}$ (Watt)	Exponent
1800 08 el.65,0		1802	391	1735	21,50	12,60	2.917,6	855,2	994,4	739,2	504,0	294,4	1,329
1800 10 el.65,0		1802	481	1735	26,90	15,80	3.647,0	1.069,0	1.243,0	924,0	630,0	368,0	1,329
1800 12 el.65,0		1802	571	1735	32,30	19,00	4.376,4	1.282,8	1.491,6	1.108,8	756,0	441,6	1,329
2000 08 el.65,0		2002	391	1935	24,10	13,80	3.263,2	956,0	1.112,0	828,8	567,2	332,0	1,319
2000 10 el.65,0		2002	481	1935	30,10	17,20	4.079,0	1.195,0	1.390,0	1.036,0	709,0	415,0	1,319
2000 12 el.65,0		2002	571	1935	36,10	20,60	4.894,8	1.434,0	1.668,0	1.243,2	850,8	498,0	1,319

Thanks to the high performance of Irsap TESI RUNNER radiators, the ideal Δt for low temperature projects is Δt at 30°C .

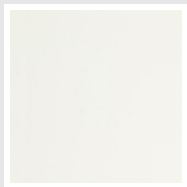
For Δt different from 50°C use the formula: $Q=Q_n (\Delta t / 50)^n$

Standard equipment

• kit for fixing to the wall in a finish coordinated with the radiator • hydraulic connection kit (valve and lockshield valve) in a finish coordinated with the radiator • chrome-plated vent valve kit • kit of pipe covers and hole cover kit (rosettes) • 1 1/2" end plug complete with chrome-plated cover N.B. The valves provided are a valve and lockshield valve in a angle version or angle valve assembly with pitch 50 mm for versions with a 50 mm connection, complete with couplings for copper fittings (diameter 12, 14 and 15 mm), and multilayer pipes (14 thick 2 and 16 thick 2).

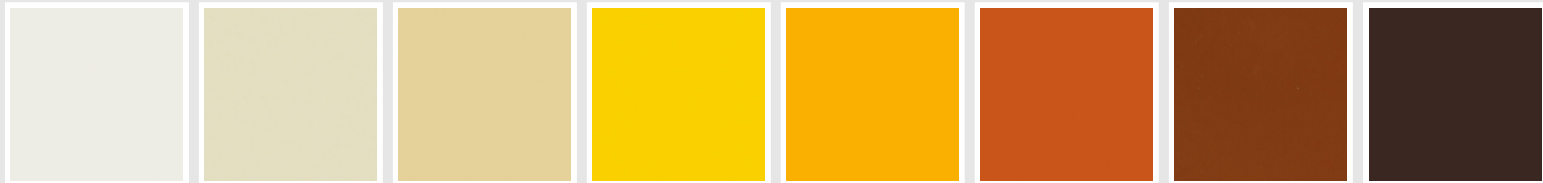
Colors and Finishes

STANDARD

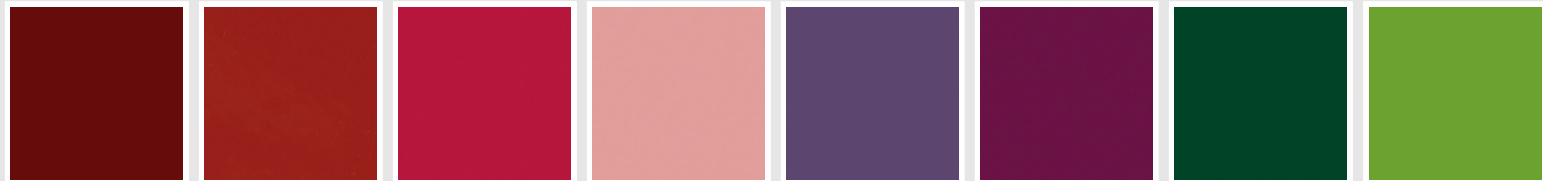


Standard White
Cod. 01

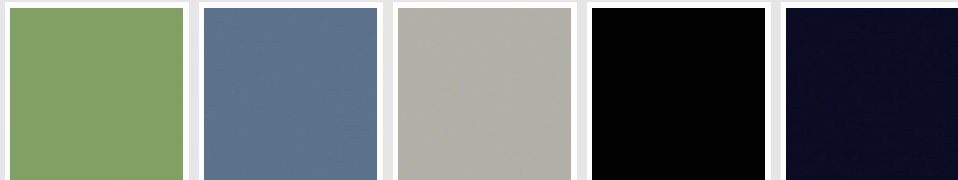
CLASSIC



Edelweiss White Cod. 34	Ivory - RAL 1013 Cod. 02	Beige Cream Cod. 26	Yellow - RAL 1021 Cod. 04	Melon Yellow - RAL 1028 Cod. E7	Orange - RAL 2004 Cod. 17	Brown Rust - RAL 8004 Cod. E1	Brown - RAL 8017 Cod. 09
----------------------------	-----------------------------	------------------------	------------------------------	------------------------------------	------------------------------	----------------------------------	-----------------------------



Claret - RAL 3003 Cod. 06	Red - RAL 3000 Cod. 05	Strawberry Red - RAL 3018 Cod. Y3	Pink - RAL 3015 Cod. R2	Bluish Lilac - RAL 4005 Cod. R3	Purple Traffic - RAL 4006 Cod. R6	Woodland Green - RAL 6005 Cod. 19	Green Grass - RAL 6018 Cod. N3
------------------------------	---------------------------	--------------------------------------	----------------------------	------------------------------------	--------------------------------------	--------------------------------------	-----------------------------------



Sage Green - RAL 6021 Cod. E6	Pastel Blue - RAL 5024 Cod. G7	Manhattan Grey Cod. 03	Black - RAL 9005 Cod. 10	Deep Blue Cod. 2F
----------------------------------	-----------------------------------	---------------------------	-----------------------------	----------------------

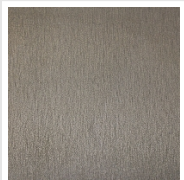
SPECIAL



Pearl White Cod. 16	Quartz 1 Cod. 1C	Sablé Cod. Y4	Quartz 2 Cod. 2C	Sunstone Cod. 2D	Tobacco Brown Cod. 1B	Flame Red Cod. 7D	Purple Blue Cod. 1D
------------------------	---------------------	------------------	---------------------	---------------------	--------------------------	----------------------	------------------------

							
Azurite 3 Cod. 6C	Medium Grey Cod. 4D	Titanium Grey Metallic - RAL 9023 Cod. L3	Pearl Grey Cod. L6	Graphite Black Cod. 18	Quartz Grey Cod. 31	Satin Black Cod. 30	Matt White Cod. J8
							
Matt Black Cod. K1	Agave Cod. 9N	North Sea Blue Cod. 1P	Ice Cod. 3P	Matt Blue Dove - RAL 5014 Cod. 4P	Matt Light Grey Cod. 8N	Ash Grey - Ral 7021 Cod. G1	Hammered Grey Metallic Cod. 32
							
Hammered Copper Cod. J4							

FINISHES



Loft Finishing
Cod. TR

RAL



Other RAL Colours (following feasibility study)
Cod. ALTRIRAL

The Colors used in this folder are not considered binding. The different technological painting processes and the materials used for the realization can not have a perfect color match with the delivered product. Irsap company reserves the right to introduce at any time whatever modifications necessary to the improvement of the product.