

The Tesi Memory model comes standard equipped with: valve, lockshield, fixing bracket with coordinated finish, chrome-plated vent valve, and satin-finished pipe cover and hole cover rose.



Tesi Memory, 8 elements, Height 1800 mm, Length 524 mm, Tobacco Brown

Construction features

sheet steel tubes with diameter 25 mm
moulded sheet steel manifolds
element length 65 mm
manifold top and bottom end threads 1/2" G right
maximum allowed working pressure 10 bar
maximum allowed working temperature 95°C

Standard equipment

kit for fixing to the wall in a finish coordinated with the radiator
hydraulic connection kit (valve and lockshield valve) in a finish coordinated with the radiator
chrome-plated vent valve kit
kit of pipe covers and hole cover kit (rosettes)
1 1/2" end plug complete with chrome-plated cover
N.B. The valves provided are a valve and lockshield valve in a angle version or angle valve assembly with pitch 50 mm for versions with a 50 mm connection, complete with couplings for copper fittings (diameter 12, 14 and 15 mm), and multilayer pipes (14 thick 2 and 16 thick 2).

Certifications



Plus



Technical data

Model	Deph (mm)	Height (mm)	Width (mm)	Conn. C. (mm)	Weigth (kg)	Capacity (lt)	Δt=50°C (btu/h)	Δt=50°C (kcal/h)	Δt=50°C (Watt)	Δt=40°C (Watt)	Δt=30°C (Watt)	Δt=20°C (Watt)	Exponent
1800 06 el.65,0		1802	394	1735	15,20	10,50	3.058,8	771,0	896,4	669,0	459,0	270,0	1,311
1800 08 el.65,0		1802	524	1735	20,30	14,00	4.078,4	1.028,0	1.195,2	892,0	612,0	360,0	1,311
1800 10 el.65,0		1802	654	1735	25,40	17,50	5.098,0	1.285,0	1.494,0	1.115,0	765,0	450,0	1,311
2000 06 el.65,0		2002	394	1935	16,80	11,50	3.392,4	855,0	994,2	742,8	510,0	300,6	1,306
2000 08 el.65,0		2002	524	1935	22,40	15,40	4.523,2	1.140,0	1.325,6	990,4	680,0	400,8	1,306
2000 10 el.65,0		2002	654	1935	28,00	19,20	5.654,0	1.425,0	1.657,0	1.238,0	850,0	501,0	1,306

Thanks to the high performance of Irsap Tesi Memory radiators, the ideal Δt for low temperature projects is Δt at 30°C.

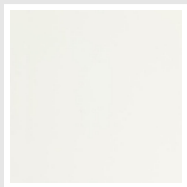
For Δt different from 50°C use the formula: $Q=Q_n (\Delta t / 50)^n$

Standard equipment

• kit for fixing to the wall in a finish coordinated with the radiator • hydraulic connection kit (valve and lockshield valve) in a finish coordinated with the radiator • chrome-plated vent valve kit • kit of pipe covers and hole cover kit (rosettes) • 1 1/2” end plug complete with chrome-plated cover N.B. The valves provided are a valve and lockshield valve in a angle version or angle valve assembly with pitch 50 mm for versions with a 50 mm connection, complete with couplings for copper fittings (diameter 12,14 and 15 mm), and multilayer pipes (14 thick 2 and 16 thick 2).

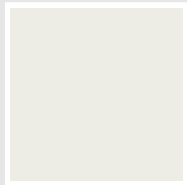
Colors and Finishes

STANDARD

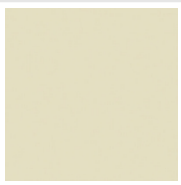


Standard White
Cod. 01

CLASSIC



Edelweiss White
Cod. 34



Ivory - RAL 1013
Cod. 02



Beige Cream
Cod. 26



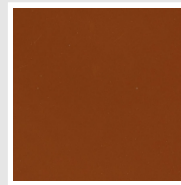
Yellow - RAL 1021
Cod. 04



Melon Yellow - RAL 1028
Cod. E7



Orange - RAL 2004
Cod. 17



Brown Rust - RAL 8004
Cod. E1



Brown - RAL 8017
Cod. 09



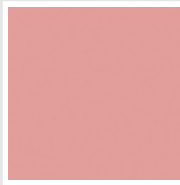
Claret - RAL 3003
Cod. 06



Red - RAL 3000
Cod. 05



Strawberry Red - RAL 3018
Cod. Y3



Pink - RAL 3015
Cod. R2



Bluish Lilac - RAL 4005
Cod. R3



Purple Traffic - RAL 4006
Cod. R6



Woodland Green - RAL 6005
Cod. 19



Green Grass - RAL 6018
Cod. N3



Sage Green - RAL 6021
Cod. E6



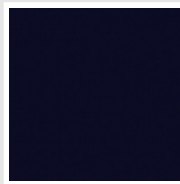
Pastel Blue - RAL 5024
Cod. G7



Manhattan Grey
Cod. 03

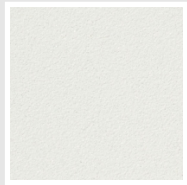


Black - RAL 9005
Cod. 10



Deep Blue
Cod. 2F

SPECIAL



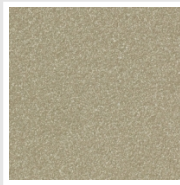
Pearl White
Cod. 16



Quartz 1
Cod. 1C



Sablé
Cod. Y4



Quartz 2
Cod. 2C



Sunstone
Cod. 2D



Tobacco Brown
Cod. 1B




Flame Red
Cod. 7D



Purple Blue
Cod. 1D

							
Azurite 3 Cod. 6C	Medium Grey Cod. 4D	Titanium Grey Metallic - RAL 9023 Cod. L3	Pearl Grey Cod. L6	Graphite Black Cod. 18	Quartz Grey Cod. 31	Satin Black Cod. 30	Matt White Cod. J8
							
Matt Black Cod. K1	Agave Cod. 9N	North Sea Blue Cod. 1P	Ice Cod. 3P	Matt Blue Dove - RAL 5014 Cod. 4P	Matt Light Grey Cod. 8N	Ash Grey - Ral 7021 Cod. G1	Hammered Grey Metallic Cod. 32
							
Hammered Copper Cod. J4							

FINISHES



Loft Finishing
 Cod. TR

RAL



Other RAL Colours (following feasibility study)
Cod. ALTRIRAL

The Colors used in this folder are not considered binding. The different technological painting processes and the materials used for the realization can not have a perfect color match with the delivered product. Irsap company reserves the right to introduce at any time whatever modifications necessary to the improvement of the product.