

TESI JOIN has a sinuous and captivating shape. The soft lines that intertwine make this heating body the protagonist of any environment in which it is inserted. TESI JOIN has as standard equipment: valve, holder, shelves for installation in a coordinated finish, chromed vent valve, chromed pipe cover and hole cover rosette. TESI JOIN is available in: 2 heights 1802 and 2002 mm; 3 widths from 391 to 571 mm; thermal powers from 994 to 1668 Watt.



Tesi Join, 10 elements, Hight 2000 mm, Lenght 481 mm, Matt Blue Dove - RAL 5014

Construction features

sheet steel tubes with diameter 25 mm
moulded sheet steel manifolds
element length 45 mm
manifold top and bottom end threads 1/2" G right
maximum allowed working pressure 10 bar
maximum allowed working temperature 95°C

Standard equipment

kit for fixing to the wall in a finish coordinated with the radiator
hydraulic connection kit (valve and lockshield valve) in a finish coordinated with the radiator
chrome-plated vent valve kit
kit of pipe covers and hole cover kit (rosettes)
1 1/2" end plug complete with chrome-plated cover
N.B. The valves provided are a valve and lockshield valve in a angle version or angle valve assembly with pitch 50 mm for versions with a 50 mm connection, complete with couplings for copper fittings (diameter 12, 14 and 15 mm), and multilayer pipes (14 thick 2 and 16 thick 2).

Certifications



Plus



Technical data

Model	Deph (mm)	Height (mm)	Width (mm)	Conn. C. (mm)	Weigth (kg)	Capacity (lt)	Δt=50°C (btu/h)	Δt=50°C (kcal/h)	Δt=50°C (Watt)	Δt=40°C (Watt)	Δt=30°C (Watt)	Δt=20°C (Watt)	Exponent
1800 08 el.65,0		1802	391	1735	21,50	12,60	2.917,6	855,2	994,4	739,2	504,0	294,4	1,329
1800 10 el.65,0		1802	481	1735	26,90	15,80	3.647,0	1.069,0	1.243,0	924,0	630,0	368,0	1,329
1800 12 el.65,0		1802	571	1735	32,30	19,00	4.376,4	1.282,8	1.491,6	1.108,8	756,0	441,6	1,329
2000 08 el.65,0		2002	391	1935	24,10	13,80	3.263,2	956,0	1.112,0	828,8	567,2	332,0	1,319
2000 10 el.65,0		2002	481	1935	30,10	17,20	4.079,0	1.195,0	1.390,0	1.036,0	709,0	415,0	1,319
2000 12 el.65,0		2002	571	1935	36,10	20,60	4.894,8	1.434,0	1.668,0	1.243,2	850,8	498,0	1,319

Thanks to the high performance of Irsap TESI JOIN radiators, the ideal Δt for low temperature projects is Δt at 30°C.

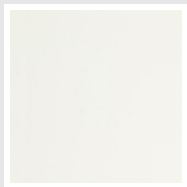
For Δt different from 50°C use the formula: $Q=Q_n (\Delta t / 50)^n$

Standard equipment

• kit for fixing to the wall in a finish coordinated with the radiator • hydraulic connection kit (valve and lockshield valve) in a finish coordinated with the radiator • chrome-plated vent valve kit • kit of pipe covers and hole cover kit (rosettes) • 1 1/2” end plug complete with chrome-plated cover N.B. The valves provided are a valve and lockshield valve in a angle version or angle valve assembly with pitch 50 mm for versions with a 50 mm connection, complete with couplings for copper fittings (diameter 12, 14 and 15 mm), and multilayer pipes (14 thick 2 and 16 thick 2).

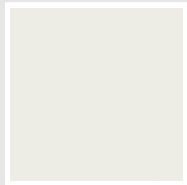
Colors and Finishes

STANDARD



Standard White
Cod. 01

CLASSIC



Edelweiss White
Cod. 34



Ivory - RAL 1013
Cod. 02



Beige Cream
Cod. 26



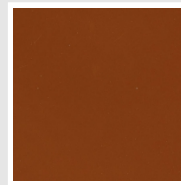
Yellow - RAL 1021
Cod. 04



Melon Yellow - RAL 1028
Cod. E7



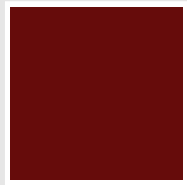
Orange - RAL 2004
Cod. 17



Brown Rust - RAL 8004
Cod. E1



Brown - RAL 8017
Cod. 09



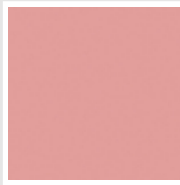
Claret - RAL 3003
Cod. 06



Red - RAL 3000
Cod. 05



Strawberry Red - RAL 3018
Cod. Y3



Pink - RAL 3015
Cod. R2



Bluish Lilac - RAL 4005
Cod. R3



Purple Traffic - RAL 4006
Cod. R6



Woodland Green - RAL 6005
Cod. 19



Green Grass - RAL 6018
Cod. N3



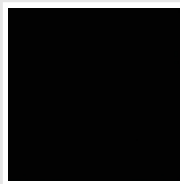
Sage Green - RAL 6021
Cod. E6



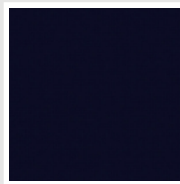
Pastel Blue - RAL 5024
Cod. G7



Manhattan Grey
Cod. 03

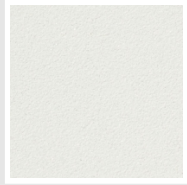


Black - RAL 9005
Cod. 10



Deep Blue
Cod. 2F

SPECIAL



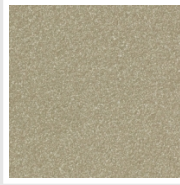
Pearl White
Cod. 16



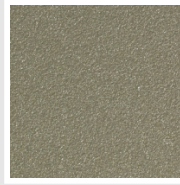
Quartz 1
Cod. 1C



Sablé
Cod. Y4



Quartz 2
Cod. 2C



Sunstone
Cod. 2D



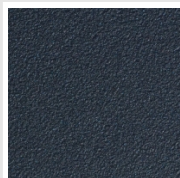
Tobacco Brown
Cod. 1B



Flame Red
Cod. 7D



Purple Blue
Cod. 1D



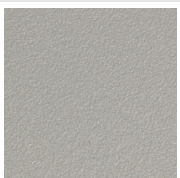
Azurite 3
Cod. 6C



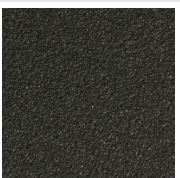
Medium Grey
Cod. 4D



**Titanium Grey
Metallic - RAL 9023**
Cod. L3



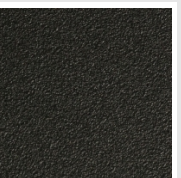
Pearl Grey
Cod. L6



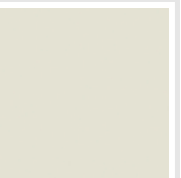
Graphite Black
Cod. 18



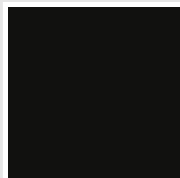
Quartz Grey
Cod. 31



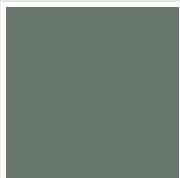
Satin Black
Cod. 30



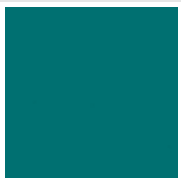
Matt White
Cod. J8



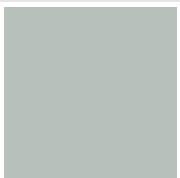
Matt Black
Cod. K1



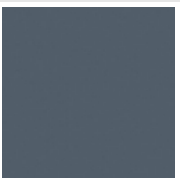
Agave
Cod. 9N



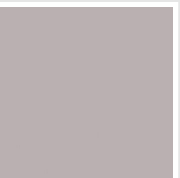
North Sea Blue
Cod. 1P



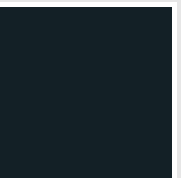
Ice
Cod. 3P



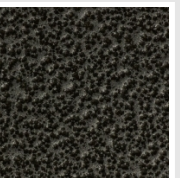
**Matt Blue Dove -
RAL 5014**
Cod. 4P



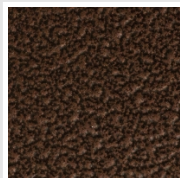
Matt Light Grey
Cod. 8N



Ash Grey - Ral 7021
Cod. G1

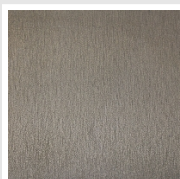


**Hammered Grey
Metallic**
Cod. 32



Hammered Copper
Cod. J4

FINISHES



Loft Finishing
Cod. TR

RAL



Other RAL Colours (following feasibility study)
Cod. ALTRIRAL

The Colors used in this folder are not considered binding. The different technological painting processes and the materials used for the realization can not have a perfect color match with the delivered product. Irsap company reserves the right to introduce at any time whatever modifications necessary to the improvement of the product.