

The cuts break the shape and make it functional for use but above all they accentuate the perceived value, making it three-dimensional and sculptural. The light and shadows reveal an intrinsic spirituality of the object. SEQUENZE is supplied with the innovative concealed hydraulic connection system installed directly in the company. Available in two models, SEQUENZE S and SEQUENZE L, with two thermal powers.



Sequenze, Hight 1735 mm, Lenght 500 mm, Ivory - RAL 1013

## **Construction features**

radiating panel

1/2" Gas right threading

maximum working pressure 4 bar

maximum working temperature 95°C

## **Standard equipment**

innovative water connection system installed on the product complete with fittings for connection to copper pipes (12, 14 and 15 mm diameter) and multilayer pipes (14 x 2 thick and 16 x 2 thick)

wall fixing system built into the product column

air vent

Certifications



Plus



Technical data

Model	Deph (mm)	Height (mm)	Width (mm)	Conn. C. (mm)	Weigth (kg)	Capacity (lt)	$\Delta t=50^{\circ}\text{C}$ (btu/h)	$\Delta t=50^{\circ}\text{C}$ (kcal/h)	$\Delta t=50^{\circ}\text{C}$ (Watt)	$\Delta t=40^{\circ}\text{C}$ (Watt)	$\Delta t=30^{\circ}\text{C}$ (Watt)	$\Delta t=20^{\circ}\text{C}$ (Watt)	Exponent
SEQUENZE S 90,0		845	500	50	16,20	0,80	1.317,0	332,0	386,0	294,0	206,0	126,0	1,225
SEQUENZE L 90,0		1735	500	50	32,20	1,70	2.518,0	635,0	738,0	560,0	392,0	238,0	1,236

Thanks to the high performance of Irsap SEQUENZE radiators, the ideal  $\Delta t$  for low temperature projects is  $\Delta t$  at  $30^{\circ}\text{C}$ .

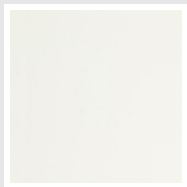
For  $\Delta t$  different from  $50^{\circ}\text{C}$  use the formula  $Q=Q_n (\Delta t / 50)^n$

Standard equipment

- innovative water connection system installed on the product complete with fittings for connection to copper pipes (12, 14 and 15 mm diameter) and multilayer pipes (14 x 2 thick and 16 x 2 thick)
- wall fixing system built into the product column
- air vent

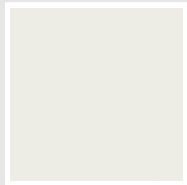
Colors and Finishes

STANDARD



Standard White  
Cod. 01

CLASSIC



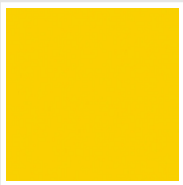
Edelweiss White  
Cod. 34



Ivory - RAL 1013  
Cod. 02



Beige Cream  
Cod. 26



Yellow - RAL 1021  
Cod. 04



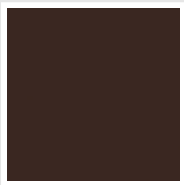
Melon Yellow - RAL 1028  
Cod. E7



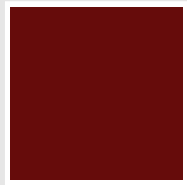
Orange - RAL 2004  
Cod. 17



Brown Rust - RAL 8004  
Cod. E1



Brown - RAL 8017  
Cod. 09



Claret - RAL 3003  
Cod. 06



Red - RAL 3000  
Cod. 05



Strawberry Red - RAL 3018  
Cod. Y3



Pink - RAL 3015  
Cod. R2



Bluish Lilac - RAL 4005  
Cod. R3



Purple Traffic - RAL 4006  
Cod. R6



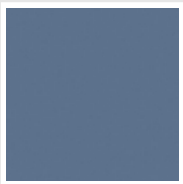
Woodland Green - RAL 6005  
Cod. 19



Green Grass - RAL 6018  
Cod. N3



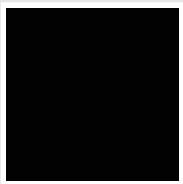
Sage Green - RAL 6021  
Cod. E6



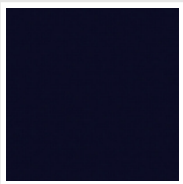
Pastel Blue - RAL 5024  
Cod. G7



Manhattan Grey  
Cod. 03

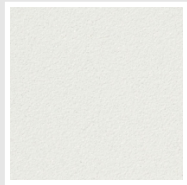


Black - RAL 9005  
Cod. 10



Deep Blue  
Cod. 2F

SPECIAL



Pearl White  
Cod. 16



Quartz 1  
Cod. 1C



Sablé  
Cod. Y4



Quartz 2  
Cod. 2C



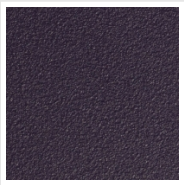
Sunstone  
Cod. 2D



Tobacco Brown  
Cod. 1B



Flame Red  
Cod. 7D



Purple Blue  
Cod. 1D

							
<b>Azurite 3</b> Cod. 6C	<b>Medium Grey</b> Cod. 4D	<b>Titanium Grey Metallic - RAL 9023</b> Cod. L3	<b>Pearl Grey</b> Cod. L6	<b>Graphite Black</b> Cod. 18	<b>Quartz Grey</b> Cod. 31	<b>Satin Black</b> Cod. 30	<b>Matt White</b> Cod. J8
							
<b>Matt Black</b> Cod. K1	<b>Agave</b> Cod. 9N	<b>North Sea Blue</b> Cod. 1P	<b>Ice</b> Cod. 3P	<b>Matt Blue Dove - RAL 5014</b> Cod. 4P	<b>Matt Light Grey</b> Cod. 8N	<b>Ash Grey - Ral 7021</b> Cod. G1	<b>Hammered Grey Metallic</b> Cod. 32
							
<b>Hammered Copper</b> Cod. J4							

## RAL



**Other RAL Colours (following feasibility study)**  
Cod. ALTRIRAL

The Colors used in this folder are not considered binding. The different technological painting processes and the materials used for the realization can not have a perfect color match with the delivered product. Irsap company reserves the right to introduce at any time whatever modifications necessary to the improvement of the product.